



REC# : 752758

RECORDED 5/8/2019 AT 1:16 PM BK# 2620 PG# 1800
Debra K. Lee, CLERK OF LARAMIE COUNTY, WY PAGE 1 OF 1

STATE OF WYOMING CORNER RECORD

(In compliance with the CORNER PERPETUATION AND FILING ACT, Wyoming Statutes, 1997 Section 33-29-140, et. seq., and the Rules and Regulations of the Board of Registrations for Professional Engineers and Professional Land Surveyors)

EAST QUARTER CORNER SECTION 30, T. 18 N., R. 62 W., 6TH P.M., LARAMIE COUNTY, WYOMING

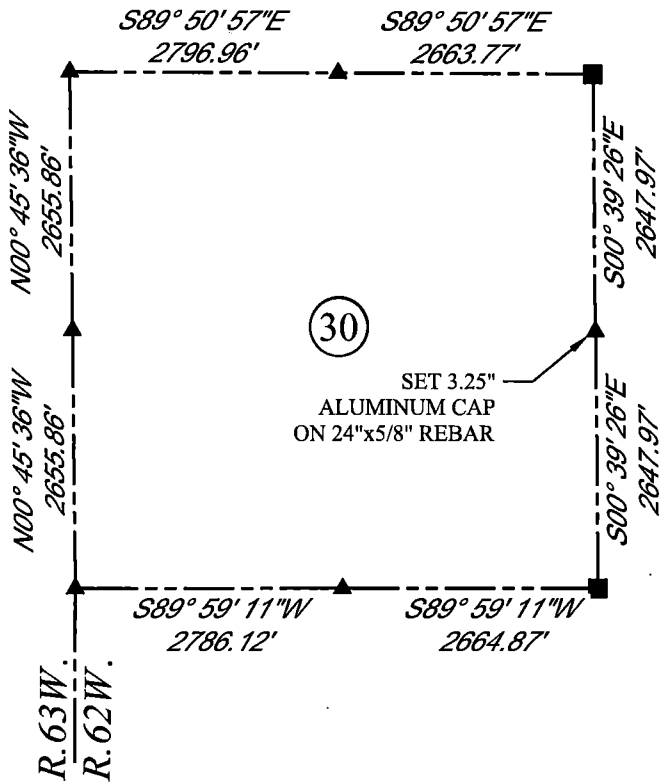
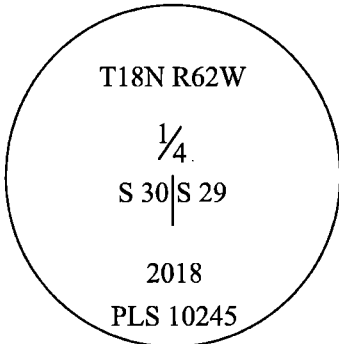
GLO: SET A SANDSTONE 16X10X4, 10 IN. DEEP MARKED 1/4 ON WEST SIDE FOR 1/4 SEC. COR.

FOUND: NOTHING. SET ALUMINUM CAP AT PROPORTIONATE (SINGLE) DISTANCE.



SCALE: NONE
NORTH DETERMINED BY
G.P.S OBSERVATIONS

SET 3.25" ALUMINUM CAP
ON REBAR, AT SURFACE,
STAMPED AS SHOWN. SET
A FIBERGLASS ROD ON
NORTH SIDE OF THE
CORNER



LEGEND:

- FOUND BLM CAP
- ⊕ FOUND USFS CAP
- FOUND STONE
- FOUND PRIVATE MONUMENT
- ◇ CALCULATED POSITION
- ▲ SET MONUMENT (LS10245)
- SECTION LINE

DATE OF FIELD WORK: 10/3/2018 OFFICE REFERENCE: MERIDEN

CROSS INDEX DIAGRAM

	1	2	3	4	5	6	7	8	9	10	11	12	13	14	15	16	17	18	19	20	21	22	23	24	25	
A																										
B																										
C		6		5		4		3		2		1														
D																										
E																										
F																										
G		7		8		9		10		11		12														
H																										
J																										
K																										
L		18		17		16		15		14		13														
M																										
N																										
O																										
P		19		20		21		22		23		24														
Q																										
R																										
S																										
T		30		29		28		27		26		25														
U																										
V																										
W																										
X		31		32		33		34		35		36														
Y																										
Z																										

WOOD
2615 AVIATION DRIVE
SHERIDAN, WY 82801
PH: 307-675-6400

wood.

THIS CORNER RECORD WAS
PREPARED BY ME OR UNDER
MY DIRECTION AND
SUPERVISION,
SEAL AND SIGNATURE

